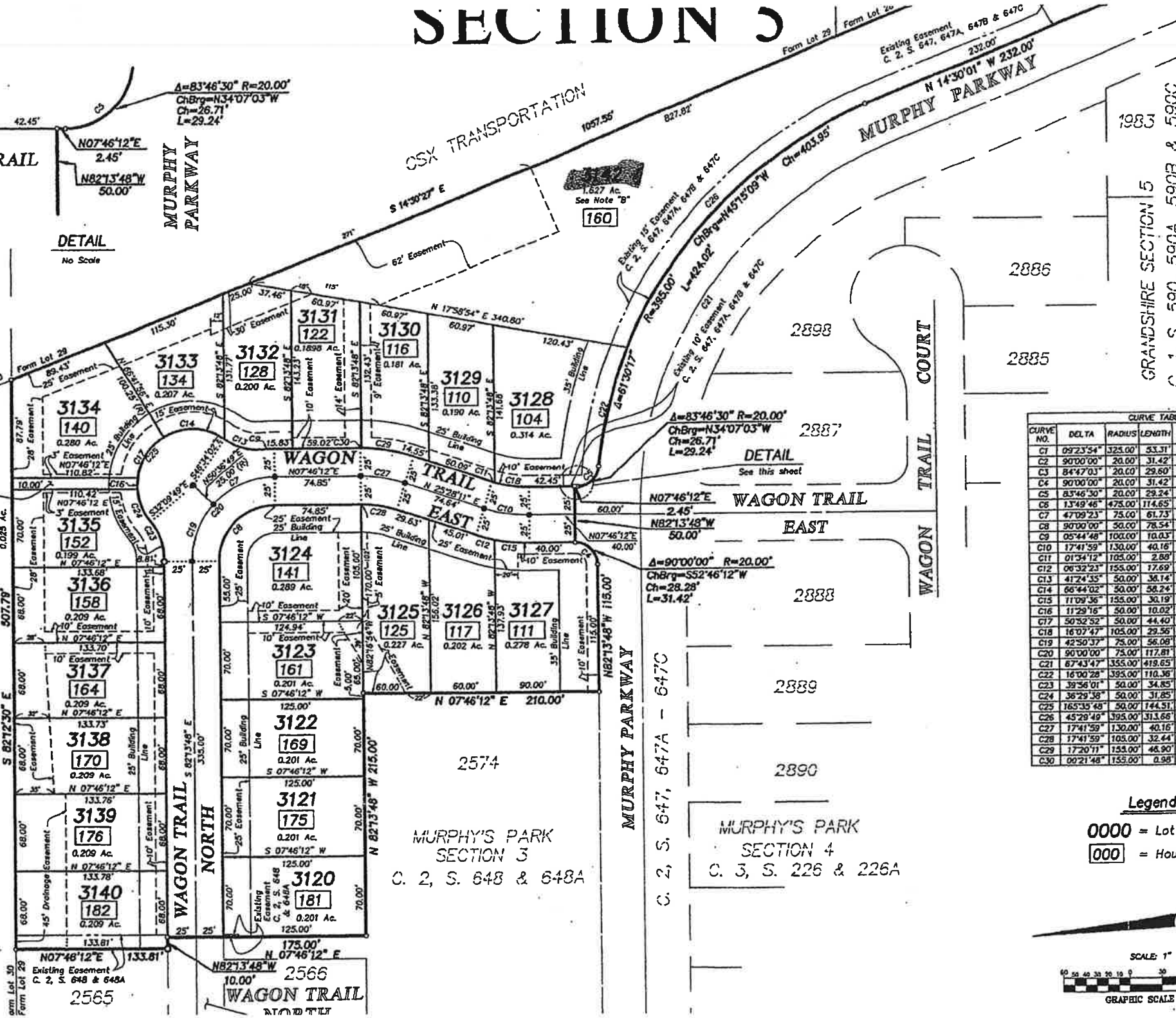


SECTION 5

WAGON TRAIL EAST

DETAIL
No Scale

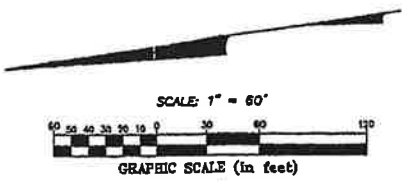
JOHN W. MESSMORE,
TRUSTEE
D.B. 616, P. 523



CURVE TABLE					
CURVE NO.	DELTA	RADIUS	LENGTH	CHORD BEARING	CHORD DISTANCE
C1	09°23'54"	323.00'	53.31'	N 86°33'45" W	53.25'
C2	90°00'00"	20.00'	31.42'	N 37°13'48" W	28.28'
C3	84°47'03"	20.00'	29.60'	S 50°09'43" W	26.97'
C4	90°00'00"	20.00'	31.42'	N 52°46'12" E	28.28'
C5	83°46'30"	20.00'	29.24'	S 34°07'03" E	26.71'
C6	13°49'46"	475.00'	114.65'	N 85°38'22" E	114.37'
C7	47°09'23"	75.00'	61.73'	N 15°48'29" W	60.00'
C8	90°00'00"	50.00'	78.54'	N 37°13'48" W	70.71'
C9	05°44'48"	100.00'	10.03'	N 04°33'48" E	10.03'
C10	17°41'59"	130.00'	40.16'	S 16°37'12" W	40.00'
C11	01°34'12"	105.00'	2.88'	S 24°41'05" W	2.88'
C12	06°32'23"	155.00'	17.69'	S 22°11'59" W	17.68'
C13	41°24'35"	50.00'	36.14'	S 22°43'41" W	35.36'
C14	66°44'02"	50.00'	38.24'	N 10°03'57" E	55.00'
C15	11°09'36"	155.00'	30.19'	S 13°21'00" W	30.14'
C16	11°29'16"	50.00'	10.02'	N 79°55'34" W	10.01'
C17	50°52'52"	50.00'	44.40'	N 48°44'30" W	42.96'
C18	16°07'47"	105.00'	29.56'	S 15°50'06" W	29.46'
C19	42°50'37"	75.00'	56.06'	N 60°48'29" W	54.78'
C20	90°00'00"	75.00'	117.81'	N 37°13'48" W	106.07'
C21	67°43'47"	355.00'	419.65'	N 48°21'54" W	395.64'
C22	16°00'28"	395.00'	110.36'	N 89°00'04" W	110.00'
C23	39°56'01"	50.00'	34.85'	N 77°48'11" E	34.15'
C24	36°29'38"	50.00'	31.85'	S 76°05'00" W	31.31'
C25	165°35'48"	50.00'	144.51'	N 39°21'55" W	99.21'
C26	45°29'49"	395.00'	313.66'	N 37°14'55" W	305.48'
C27	17°41'59"	130.00'	40.16'	N 16°37'12" E	40.00'
C28	17°41'59"	105.00'	32.44'	N 16°37'12" E	32.31'
C29	17°20'11"	155.00'	48.90'	N 16°48'05" E	48.72'
C30	00°21'48"	155.00'	0.98'	N 07°57'06" E	0.98'

Legend

- 0000 = Lot Number
- 000 = House Address



GRANDSHIRE SECTION 5
C. 1, S. 590, 590A, 590B & 590C

1983

2886

2885

2898

2887

2888

2889

2890

MURPHY'S PARK
SECTION 4
C. 3, S. 226 & 226A

MURPHY'S PARK
SECTION 3
C. 2, S. 648 & 648A

2574

2565

2566

160

146

181

182

183

184

185

186

187

188

189

190

191

192

193

194

195

196

197

198

199

200

201

202

203

204

205

206

207

208

209

210

211

212

213

214

215

216

217

218

219

220

221

222

223

224

225

226

227

228

229

230

231

232

233

234

235

236

237

238

239

240

241

242

243

244

245

246

247

248

249

250

251

252

253

254

255

256

257

258

259

260

261

262

263

264

265

266

267

268

269

270

271

272

273

274

275

276

277

278

279

280

281

282

283

284

285

286

287

288

289

290

291

292

293

294

295

296

297

298

299

300